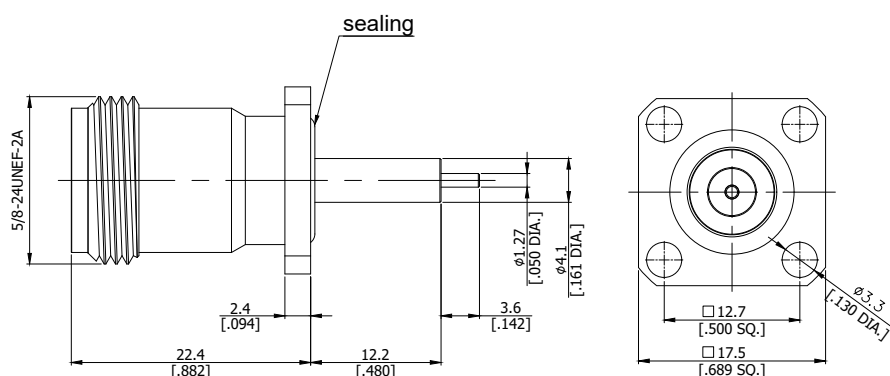
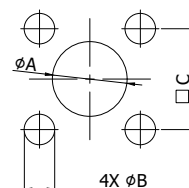


N Jack (Female) Connector Solder Attachment 4 Hole Flange Mount
Stub Terminal, 18.25mm (.719 inch) Hole Spacing DC-11GHz VSWR1.20

N2GFA50-3820A / 9X



Mounting Dimensions



	mm		inch	
	Max.	Min.	Max.	Min.
A	4.3	4.2	0.169	0.166
B	3.4	3.35	0.134	0.132
C	13.3	12.2	0.524	0.480

All dimensions are in mm [inch]

Tolerances according to DIN ISO 2768-mH

Interface

According to

IEC 61169-16; MIL-STD-348B/304

Electrical Data

Impedance

50 Ω

Frequency

DC to 11 GHz

VSWR (Return Loss)

≤ 1.20 (≥ 20.83 dB)

Insertion Loss

$\leq 0.25 \times \sqrt{F}$ (GHz) dB

Insulation Resistance

≥ 5 G Ω

Center Contact Resistance

≤ 1 m Ω

Outer Contact Resistance

≤ 0.25 m Ω

Working Voltage (at sea level)

500 V rms

Dielectric withstanding voltage

1000 V rms

Material And Plating

Piece Parts	Material	Plating
Centre contact	Beryllium Copper	Gold plating, 3 μ inch (Non-magnetic nickel-phosphorus underplating, 80 μ inch)
Body	Stainless Steel	Passivated
Insulator	PTFE	

N Jack (Female) Connector Solder Attachment 4 Hole Flange Mount
Stub Terminal, 18.25mm (.719 inch) Hole Spacing DC-11GHz VSWR1.20

N2GFA50-3820A / 9X

Mechanical Data

Coupling mechanisms	Screw-lock
Mating Cycles	≥ 500
Centre Contact	Soldered
Terminal Type	Stub
Captivated Type	Mechanical
Coupling Test Torque	1.7 Nm max.
Recommended Torque	0.7 Nm to 1.1 Nm

Environmental Data

Temperature Range	-55°C to +155°C
Thermal shock	MIL-STD-202, Meth. 107, Cond. B
Corrosion	MIL-STD-202, Meth. 101, Cond. B
Vibration	MIL-STD-202, Meth. 204, Cond.D
Shock	MIL-STD-202, Meth. 213, Cond. I
Moisture Resistance	MIL-STD-202, Meth. 106
RoHS	compliant

Packing

Single or 100